

PRO MESH SERIES

SinoBlue's "Pro Mesh" Innovation

SinoBlue invented Pro Mesh engineered material for use in a series of equine applications. Pro Mesh material not only acts like 'flexible horse armor' but also offers an ultimate combination of breathability/cooling, impact and abrasion protection, support and flexibility in a totally waterproof design and RoHS/REACH environmentally Green materials .

Pro Mesh Advantages

- ✓ **Protects, Supports, Flexible**
- ✓ **Breathable** - Great ventilation, stops sand and dirt from passing through.
- ✓ **Lightweight** - Hexagonal holes are nature's perfect strength-to-weight design.
- ✓ **Water Resistant**
- ✓ **Strong, Tough and Tear Resistant**
- ✓ **Customized/OEM Design Support**

Pro Mesh Defined

Invented by SinoBlue, Pro Mesh material is RoHS/REACH compliant German quality BASF® TPU directly injected into a strong but breathable fabric mesh. Pro Mesh is created during the injection molding process under high heat and pressure. No glues or adhesives are used. Synergy was attained resulting in a strong composite material that protects from impacts and abrasion, will not separate, is extremely durable, totally breathable, will not let sand and dirt pass through, is waterproof and provides great flexibility .

Certified
BASF® TPU
German Quality

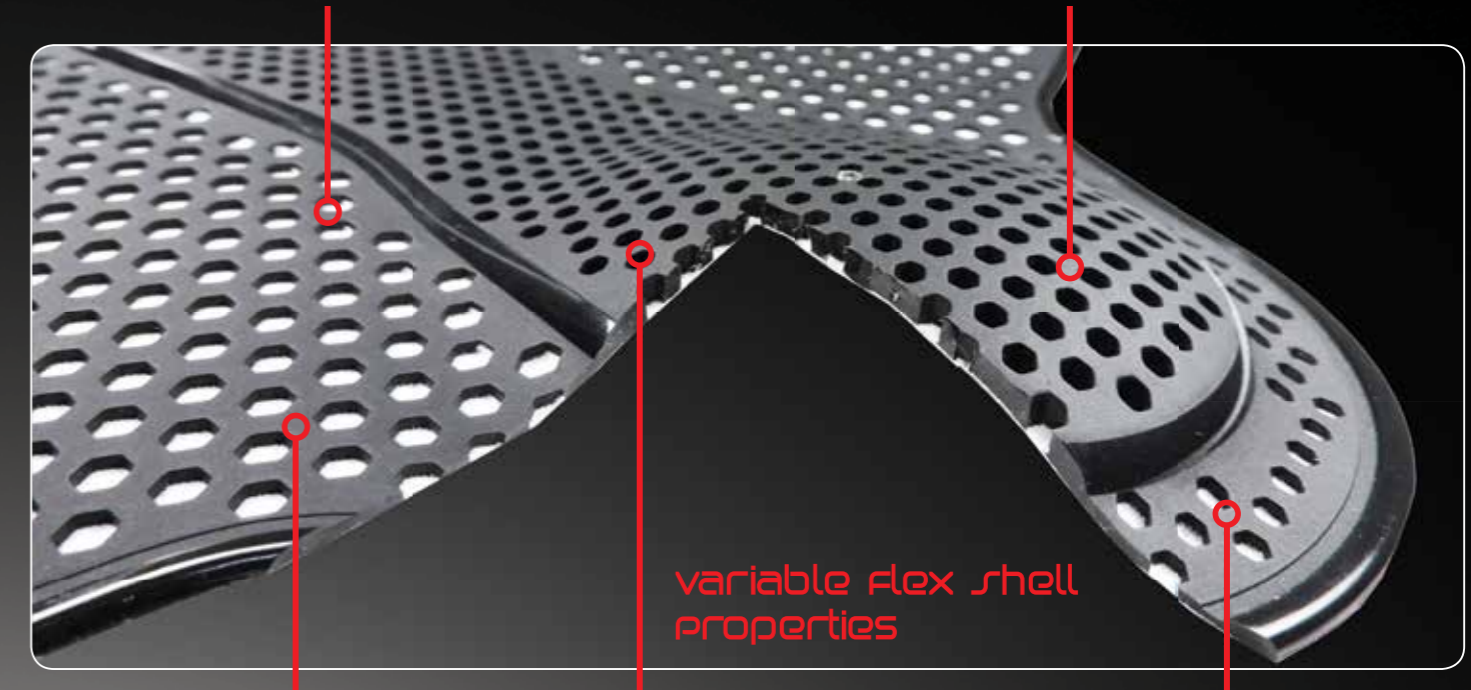
generation 3

PRO MESH SERIES

Pro Mesh Generation 3 Composite Design

TPU Injected Directly into the Threads of a Strong, Breathable Fabric Mesh for a Permanent Mechanical Bond. No Glues or Adhesives Used

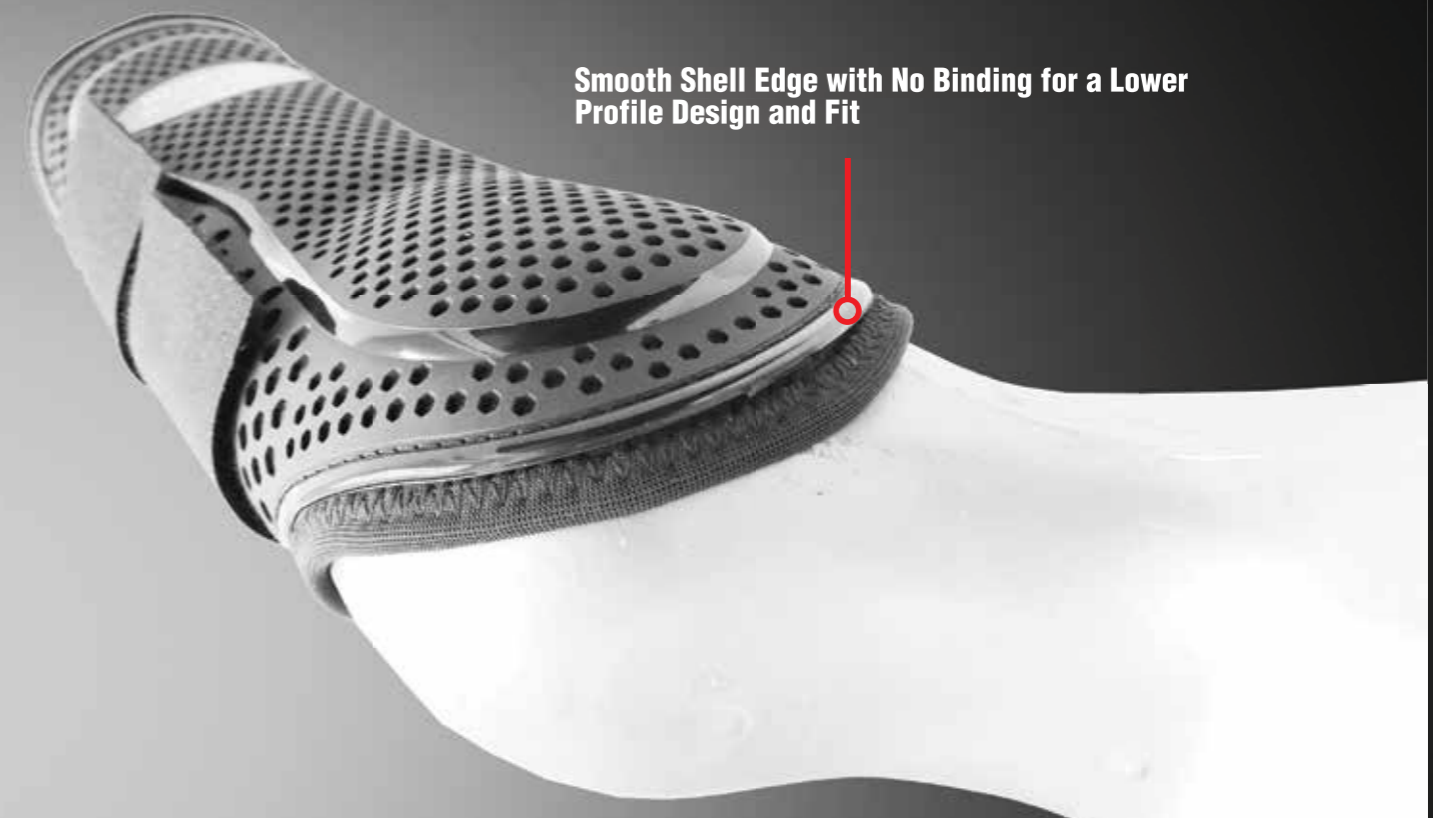
Can be Shaped and Formed



Larger Holes for Better Stretch, Flexibility and Air Flow

Smaller Holes and Thicker Material for Improved Impact Protection

Medium Hole Size For Normal Flexibility



PRO MESH SERIES

generation 3

SINOBLUE

PRO MESH SERIES

variable flex Dressage/Splint/Brushing Boot

Pro Mesh G3 Dressage/Splint/Brushing Boots offer versatile leg protection. Pro Mesh composite material offers 360° protection and air flow for cooling legs. Waterproof materials and non-slip lining make the boots great for wet conditions. The hypoallergenic lining is ideal for horses with sensitive skin. Green Design means all materials are documented RoHS/REACH compliant. Ideal for dressage, turnout, trail, endurance riding, flatwork training and other general brushing protection needs.

Dressage/Splint/Brushing Boot variable flex

Certified
BASF® TPU
German Quality



- Pro Mesh Dressage/Splint SB63001 BK
 - Pro Mesh Dressage/Splint SB63001 WHT
- Sizes: Medium, Large and XLarge. Boots fit front or hind Legs.
Fabric Colors: Black, White, Red, Blue and others by request.
TPU Colors: Standard White, Black, any Pantone® color by request.



Integrated Strike, Less Stitching, Breathable



Low Profile and Form Fitting



Lightweight
Medium: ~120 grams
Large: ~150 grams
XLarge: ~165 grams

Conforming Shaped Fit

Pro Mesh Allows Provides Great Flexibility



360° Protection



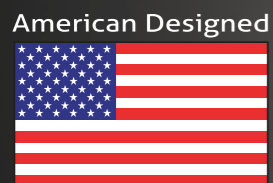
Polyolefin Non-Slip Breathable Lining



Computerized Cross-Boxed Stitching



Low profile glove-like fit. Can be used on Front or Hind legs



PRO MESH SERIES

variable flex Dressage/Splint/Brushing Boot

Certified
BASF® TPU
German Quality

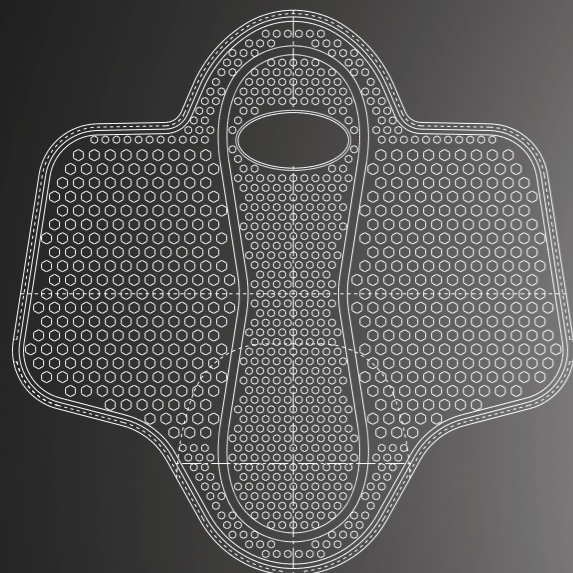
Dressage/Splint/Brushing Boot **variable flex**



Dressage/Splint Boot with Fleece

Features:

- Pro Mesh TPU Protective Outer Layer
 - Fleece Lining
 - Strong Velcro Closures
- Dressage/Sport Boot Fleece Black SB63002 BK
 - Dressage/Sport Boot Fleece White SB63002 WHT
 - Sizes: S, M, and L
- Note:** Can fit front or hind leg.



PRO MESH SERIES

pro mesh G2 Cross Country Front Boot

Pro Mesh G2 Cross Country Front boots protect the world's top Event horses

- Integrated Pebax® Strikeguard
- Shaped Fetlocks
- Keeps Dirt/Debris Out
- Integrated Fetlock Strike Protection
- Waterproof Bonded Stitching
- Breathable
- Excellent Flexibility
- Comfortable and Lightweight
- Will Not Absorb Water
- Hypoallergenic Non-Slip Lining
- RoHS and REACH Compliant
- No Neoprene, No PVC

- XC G2 Boot Front Black
- XC G2 Boot Front White

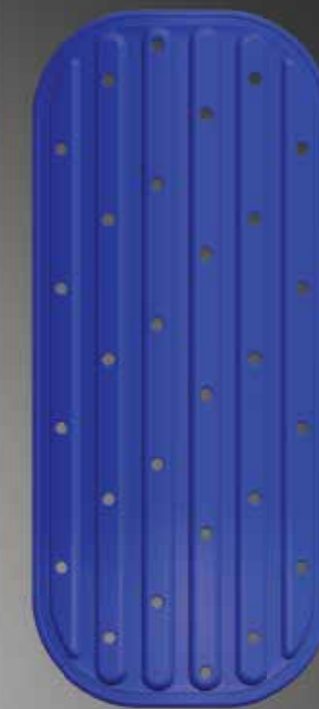
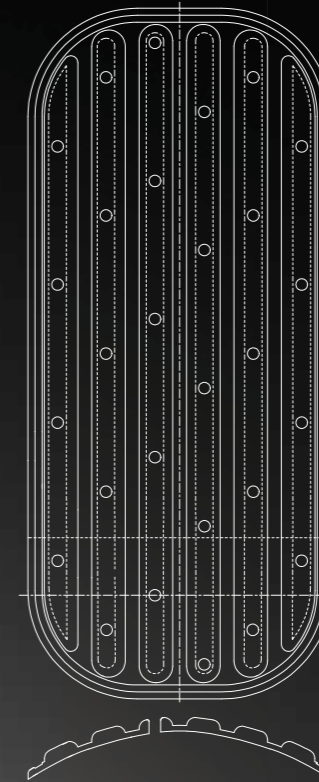
SB63260 BK
SB63260 WHT

Specially designed Pebax® strike guard on the inside of the boot in the flexor tendon area. Pebax is lightweight and will not shatter and splinter like many hard plastics and carbon fiber can.



PRO MESH SERIES

Cross Country Front Boot pro mesh G2



PRO MESH SERIES

PRO MESH SERIES

Certified
BASF® TPU
German Quality

pro mesh GI Cross Country Front Boot

Cross Country Hind Boot pro mesh GI

Used on numerous five star event horses, the boots provide the ultimate combination of impact and abrasion protection, breathability, support and durability in a lightweight and flexible boot.

- Pro Mesh Provides 360° Protection
- Breathable Design
- Lightweight
- Do Not Absorb Water
- Integrated Pebax® Strike Guard
- Flexible and Conform to the Horse's Leg
- Do Not Slip in Wet Conditions

- XC1 Boot Front Black SB63218 BK
- XC1 Boot Front White SB63218 WHT
- XC2 Boot Hind Black SB63217 BK
- XC2 Boot Hind White SB63217 WHT
- Sizes: S, M, L
- Colors: (For Pro Mesh Outer Layer): Black, White. Other colors by request. We can match any Pantone color.



Specially designed Pebax® strike guard on the inside of the boot. Pebax is lightweight and will not shatter and splinter like many hard plastics and carbon fiber can.



AIR SHOCK SERIES

air shock Open Front Tendon Boot

Jump boots feature “Air Shock” cushioning made of pressurized gas in a tough and flexible TPU bag. The air bag works together with the harder, specially shaped strike guard to reduce concussion force. The air bag then returns to its original shape and volume. The air bags also help enhance boot fit. The air cushions are lightweight, durable and last the life of the boot.



Dual Hardness Shell is Harder in Critical Areas, More Flexible in Others.

Air Shock Technology

- ✓ **Advanced Concussion and Impact Protection**
- ✓ **Air Bag Provides Great Comfort and Better Fit**
- ✓ **Works together with the Specially Shaped Strike Guard**
- ✓ **Similar Technology used in Professional Football Helmets**



- Air Shock Open Front Tendon Boot
- Air Shock Open Front Hind Boot
- Air Shock Fetlock Boot

Full Size
Full Size
Full Size

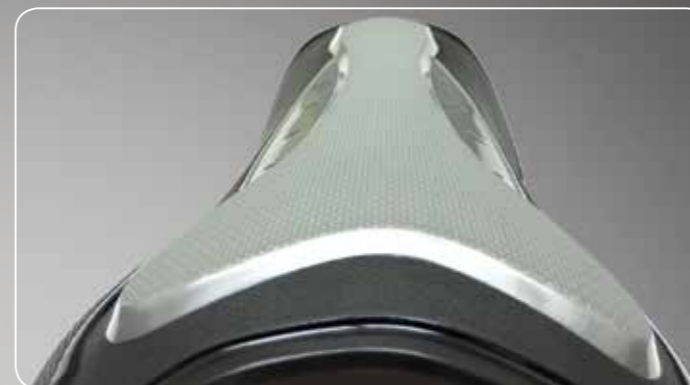
SB63147
SB63208
SB63149

AIR SHOCK SERIES

Open Front Tendon Boot air shock



Anatomically Shaped Shell



The raised strike guard is made of a harder/stiffer TPU material to dampen/spread out impact force.



AIR SHOCK SERIES

AIR SHOCK SERIES

air shock Open Front Tendon Boot

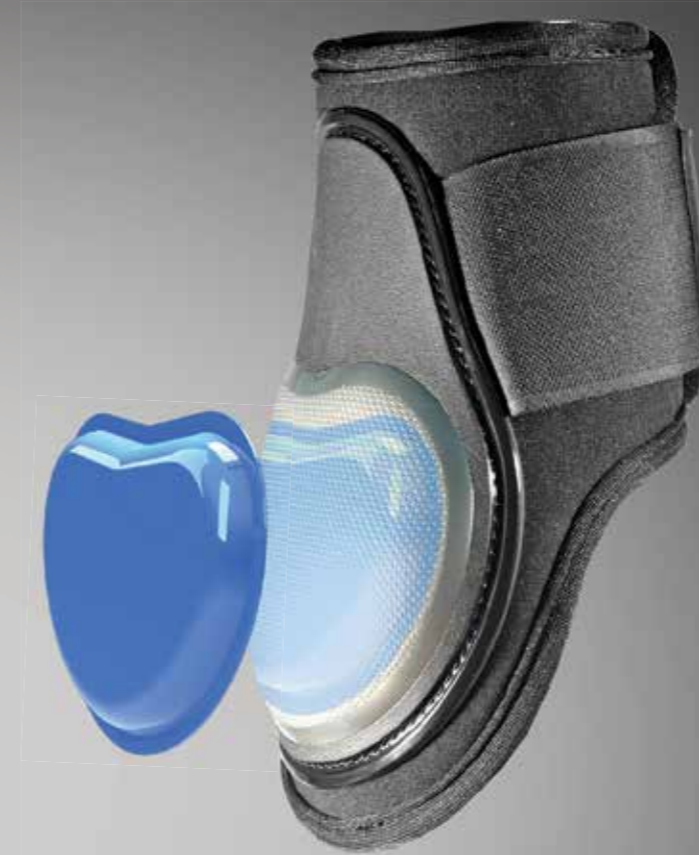
Open Front Hind and Fetlock Boot air shock

Certified
BASF® TPU
German Quality

• Air Shock Open Front Tendon Boot Full Size SB63147



TPU Fastener has Insert Tooling for Logo
Highest Quality Solid Brass Stud



FEI Young Horse Compliant

AIR SHOCK SERIES

air shock Open Front Hind Boot

• Air Shock Open Front Hind Boot Full Size SB63208



Stud Fasteners or Elastic with Velcro Closures



American Designed



Certified
BASF® TPU
German Quality

• Air Shock Fetlock Boot Full Size SB63149



FEI Young Horse Compliant



LEG PROTECTION

SB63005

Neoprene Splint boot has a super soft and nice feel. Double padded strike guard protection. Strong yet soft binding with single locking velcro closures. Colors: Black and others by request. Sizes: S, M, L

- Neoprene Splint Boot SB63005



LEG PROTECTION

SB63102, SB63103, SB63101

Front and hind splint and fetlock boots with TPR strike and neoprene body. Double-locking velcro closures. Colors (10): (for neoprene): Black, Navy Blue, Red, Burgundy, Teal, Light Brown, Sky Blue, Neon Green, Neon Pink, Orange, and Gray. Sizes: S, M, L

- Front Brushing Boot SB63102
- Hind Brushing Boot SB63103
- Fetlock Boot SB63101



SB63101



LEG PROTECTION

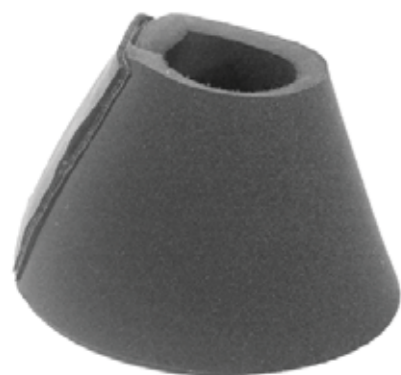


SB63197

● Neoprene Over Reach is super soft and gentle on horse. Thick 10mm neoprene. Color: Black. Sizes: S, M, L, XL, XXL

SB63197 FLEECE

● Neoprene Over Reach is super soft and gentle on horse. Thick 10mm neoprene with fleece. Color: Black. Sizes: S, M, L, XL, XXL



SB63409

● Neoprene Over Reach. Extra thick 13mm neoprene and velcro closure. Color: Black. Sizes: S, M, L, XL, XXL



SB63412

● Neoprene Over Reach with tough material outside. Color: Black. Sizes: S, M, L, XL, XXL



SB63408

● Neoprene Over Reach. Made with faux leather overlay. Color: Black. Sizes: S, M, L, XL, XXL



SB63532

● Neoprene Over Reach w/ Pro Mesh outer layer. Optional Fleece. Colors: Black and White. Sizes: S, M, L, XL



SB63225

● Pull On Rubber Bell Boots Rubber bell boots with stretch tops. Colors: Black, White, Blue, Red and Green. Sizes: S, M, L, XL



SB63219

● Rubber Bell Boot. Colors: Black, White, Blue, Red and Green. Sizes: S, M, L, XL



SB63215

● Rubber Bell Boot w/Fleece. Colors: Black, White, Blue, Red and Green. Sizes: S, M, L, XL



SB63432

● Rubber Bell Boot. Colors: Black, White, Blue, Red and Green. Sizes: S, M, L, XL



SB63227

● Rubber bell boot with locking closure. Colors: Black, White, Blue, Red and Green. Sizes: S, M, L



SB63240

● Stall Bandage, Size: 4" x 9". 1 set of 4pcs. Colors (11): Black, White, Red, Gold, Brown, Burgundy, Forest Green, Hunter Green, Navy Blue, Royal Blue, Purple.



LEG PROTECTION